



EAGLE

PAN TILT SYSTEMS



The EAGLE® PT-101 pan-tilt head is a quiet, easy to use unit. It will find acceptance in many areas, a few of which are teleconferencing, city council meeting broadcasting, distance learning, surgical documentation, local access cable broadcasting, and entertainment venues.

The PT-101's compact size allows for placement in out of sight areas, so as not to disturb participants in meetings and classes. It has an available wall mount or ceiling mount adapter to fit into many different applications.

The head has very good motion characteris-

EAGLE® PT-101 PAN TILT HEAD

Eagle® system compatible

Can link up to 32 total devices on one RS-485 control chain or be directly controlled by computer using RS-232 protocol

Worm gear driven for smooth, accurate, repeatable performance

Vector solving operation in manual or preset modes

128 presets per head, stored internally in non-volatile memory

Extremely quiet operation in upright or inverted positions

Will handle camera and lens combinations weighing up to 16 lbs.

Built in 12VDC 5A camera power supply

Optional PT-CCB-101 camera control module for integrated remote camera control of selected Hitachi cameras using Eagle® system controllers, PC software, or AMX and Crestron control systems

Control software available for Windows NT/2000/XP™ compatible PC's

5 pin connector on base allows for easy connection of power and control lines-**NO SOLDERING NEEDED!**

Video and Genlock connections made at base are passed through head to camera--no cables to get caught when panning or tilting

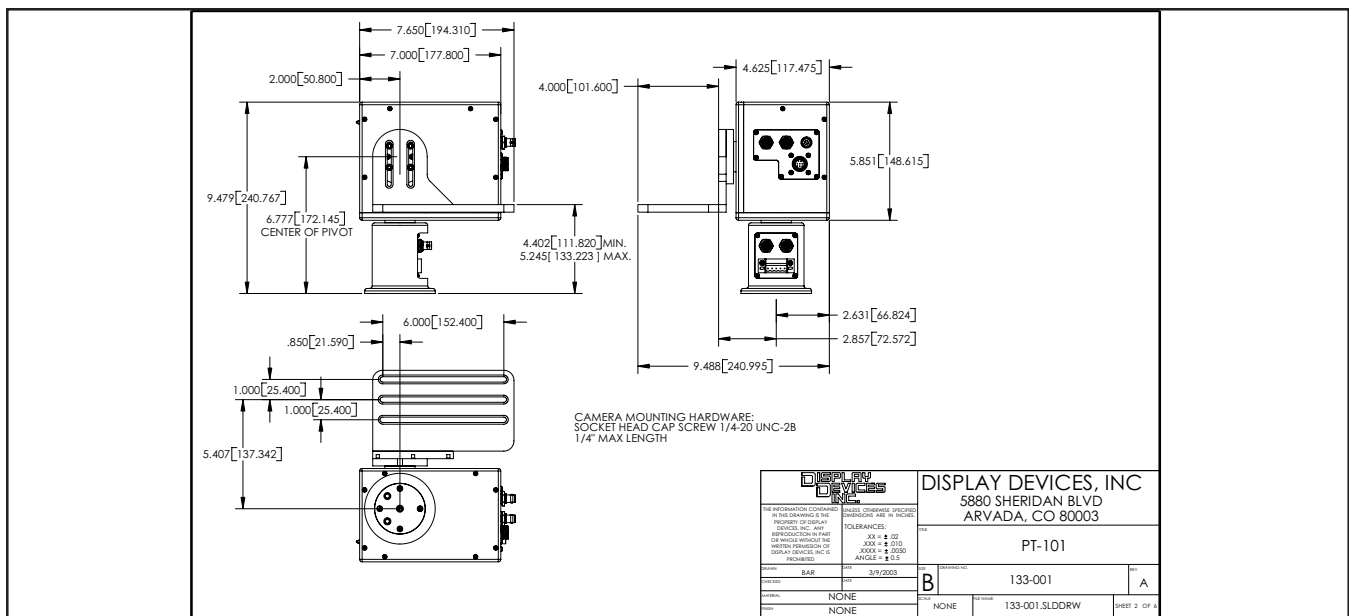
Pre-built camera control /power harness, and camera mount provided with each head

All needed connectors for power and control are included

tics, with a range of motion of up to +/- 180° in pan and +/- 90° in tilt. The unit has three overall speed ranges at up to 30° per second in both pan and tilt. Speed is completely variable from zero to full based on proportional digital joystick input.

Up to 128 different preset combinations of position and lens settings can be memorized by the head. All are stored in non-volatile memory inside each head, and can easily be recalled at any time.

The Eagle® PT-101 is for camera / lens combinations of up to 16 pounds (7.3 kg).



SPECIFICATIONS

- Weight: about 10 pounds (4.5 kg)
- Maximum load: 16 pounds (7.3 kg)
- Pan range: ± 179 degrees
- Tilt range: ± 120 degrees
- Pan and tilt speed: 0 to 30° per second, variable
- Accuracy of preset position recall: ± 5 arc minutes (.083 degrees)
- Max. number of preset positions: 128
- Requires 24VDC power, minimum 2.5A: max draw with camera: 4.5
- Worm gear drive with high-torque stepper motors
- Uses RS-485 or RS-232 communications protocol; no adapters required
- Provides 12VDC camera power at up to 5 amps (cameras drawing more than 2 amps require usage of PT-PS-3 power supply)

Eagle™ products are designed and manufactured in the USA by Display Devices Inc., Arvada CO 80003

Distributed by Hitachi Kokusai Electric America Ltd.
 150 Crossways Park Dr. Woodbury NY 11797
 Call (516)921-7200 for a dealer near you

OPTIONAL ACCESSORIES

- PT-TSC2 Color TouchScreen controller
- PT-C desktop pan-tilt controller
- PT-CC desktop camera controller
- PT-CCB-101 camera control module (internal option in head)
- PT-PS-2 quad 3A output power supply
- PT-PS-3 single 6.5A output power supply
- PT-SB "Shot Box" motion control recorder
- PT-T2 one input, six output control and power splitter box
- PT-WM-L wall mount arm
- PT-CMA-101 ceiling mount adapter base for 1.5" NPT pipe
- PT-AAM Auto answer modem, includes one PT-RSA serial adapter
- PT-MP-1 control multiplexer; allows multiple controllers on single RS-485 backbone
- PT-CSI contact closure interface



EAGLE
PAN TILT SYSTEMS

Helping to bring your world
 into focus